

## ALUMINIUM DOMES



## ALUMINIUM DOME ROOFS FOR WASTEWATER PLANTS AND SEWAGE TREATMENT

*For covering clarifiers, trickling filters, basins and many other vital parts of a sewage treatment plant an aluminium dome structure is the optimal covering solution. These free span, light weight and maintenance free covers will eliminate emissions and stench. They will also contribute to sustaining a controlled process environment. CTS offers a full solution from engineering to supply and installation, which is the only way to truly get all benefits domes have to offer. With over 1,500 domes supplied worldwide CTS is the leader in engineering supply and installation of these state of the art covering solutions.*

### Aluminium domes, standards and safety

CTS' Aluminium domes are constructed according all relevant international standards such as ASCE 7-05, ADM (Aluminium Design Manual), EN 1991 and EN 1999. Local load requirements are of course reviewed, and load combinations reviewed include all common load cases and combinations between dead load, live load, unbalanced live load, wind load and if required a seismic load or snow load.

Also other applicable standards such as safety standards are fully covered by CTS as your supply partner.



### Solutions

- Moderates process temperatures
- Fully compatible with all waste water effluents
- Keeps contaminants out of the treatment process
- Clear span, light weight
- Reduces the effect of the elements (sun, rain, wind and lightning)
- Effectively reduces emissions from storage
- Optimal total cost of ownership
- Can be optimised for any possible climate

### Highlights

- Truly maintenance free, excellent vapour tightness
- Short installation time (shortest in the market) with experienced crews
- Low total cost of ownership
- Guaranteed water tightness
- Turn key solution. engineering, supply and installation
- Maximised service life (more than 50 years)
- Aesthetical solution to eliminate hazardous or irritating emissions and stench
- Possible installation in service

## ALUMINIUM DOME ROOFS

### Flat covers

CTS aluminium flat covers offer many practical advantages over traditional covers. Unlike concrete they can be removed easily and they do not degenerate. They are lightweight and they do not corrode. Nor do they degrade under UV- and Ozone exposure like most of the other materials.

### Why aluminium

Waste water atmospheres can be very aggressive and corrosive. Research and experience with our products has shown that aluminium is a suitable material and will deal with these circumstances perfectly. Even high Sulphurous atmospheres will not deteriorate aluminium alloys as used for manufacturing covers for waste water facilities. This makes aluminium technically and economically best solution for covering open facilities the in urban areas.

### Suspended covers

In certain applications the volume of air to be treated could generate a concern. The lesser the volume to be treated, the lower the treatment costs. To facilitate this drive for lower cost of ownership on air treatment facilities we offer suspended or truss supported covers. That minimise treated volumes.

### Structure and appurtenances

Besides all the advantages mentioned earlier our aluminium structures will be able to deal with existing structures like bridges, access areas, ducting and others. Engineering will revolve around a minimum in changes to the actual waste water plant and the way it is operated.

### Support and assistance

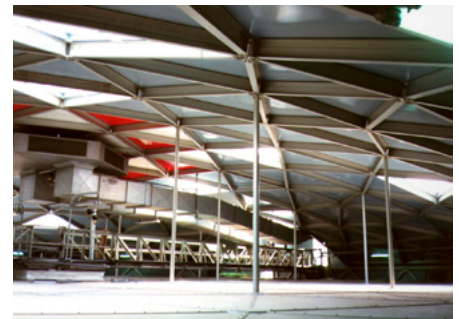
If this datasheet triggers more questions our team of experts will be always available to support and assist you in selecting the optimal solution for your specific application.



Aluminium flat covers for sedimentation bassins.



Waste water treatment plant, USA, batch reactor, truss roofs and aerobic digesters.



Suspended low cover from dome structure that reduces vapour volume to be treated.

*All our product information and specifications are drafted with extreme care but can be subject to change. We reserve the right to change product specifications.*

REVISION NO.: 201904



**CTS GROUP**

**PARTNER IN  
TANK STORAGE  
SOLUTIONS.**

#### HEAD OFFICE

**CTS NETHERLANDS B.V.**

Riga 10  
2993 LW Barendrecht  
The Netherlands

TEL +31 (0)180 531 027  
FAX +31 (0)180 531 848

EMAIL [netherlands@cts.global](mailto:netherlands@cts.global)  
WEB [www.cts.global](http://www.cts.global)