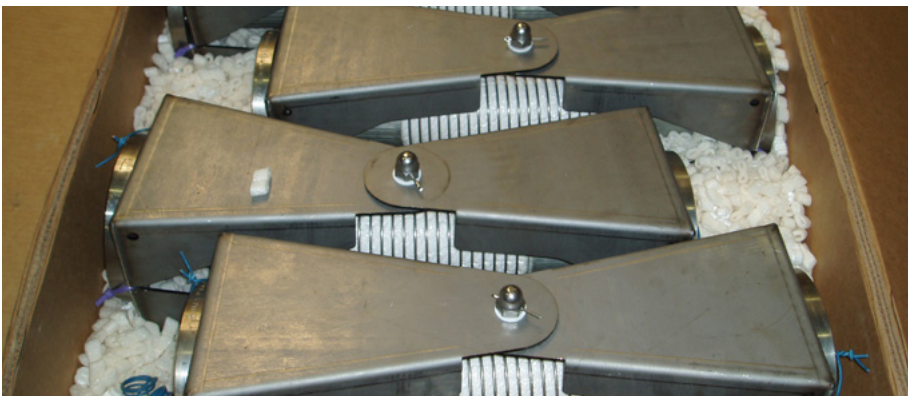


DRAINMASTER DRAIN LINE HOSE SWIVEL

Especially in climates with high rainfall water can accumulate on the external floating roof. Adequate draining of this rain water is a very important aspect of safe and reliable operation of storage tanks with external floating roofs.

Drain water on external floating roofs may contain sediments and debris, which causes the drains to malfunction. Also the placement of the drains inside the stored product makes the drain design challenging. The CTS drain solutions take these important aspects into consideration. Our drain solutions include the drain master system, swivel joint system, drain hose and flextube system.



CTS Drainmaster swivels ready for shipping.

Solutions

- Drainmaster hose swivels can be supplied in 3", 4" 6", 8", 10" and 12"
- Flange dimensions and materials can be supplied as per all international standards
- Designed for submerged service in aggressive environments
- Maintenance free
- Service life in well in excess of 20 years

Highlights

- Suitable for 100% aromatics.
- No interference with objects in the tank or roof legs
- No sediment built up as the drain line arrangement has a continuous slope
- No tank modifications required
- Suitable for use as foam delivery system
- Lightweight compared to conventional swivels
- No abrasion to either tank floor or covering layer
- Develops minimal lateral forces on floating roof
- Can be installed with a rotation stop for a defined angle

DRAINMASTER DRAIN LINE HOSE SWIVEL

Specifications

Hose:

Inner wire	SS316 (1.4401)
Lining	Polypropylene (PP)
Outer cover	Hostafon (PTFE with PE added for maximum tightness)
Outer wire	SS316 (1.4401)
Operating pressure	max. 14 bar
Vacuum	Suitable for vacuum up to -0.85 bar
Temperature range	-20°C up to +100°C

Pivot frame:

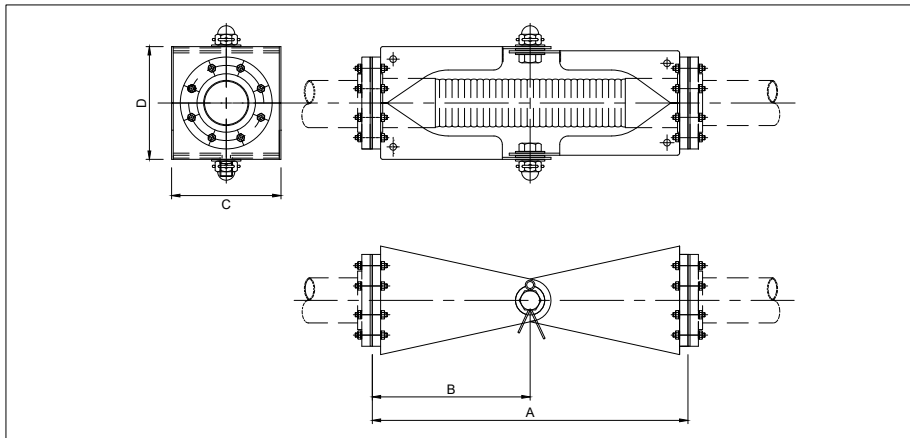
CS (non-treated, galvanised or painted), SS304L (1.4304), SS316L (1.4404), other materials are available upon request

Construction

The hose of the CTS Drainmaster is constructed from layers of fabric, reinforced with a stainless steel inner and outer helix and swaged to carbon steel tailpieces with ANSI flanges. The selected fabric materials consist of various

layers of elastomeric materials, that are especially selected for submerged use without product permeation through the fabrics. These special fabric materials make the pivot suitable for aggressive products such as MTBE and 100% aromatics. Our long experience with

composition of hoses ensures a long term performance of our Drainmaster system. The protecting flexible joint is executed with maintenance free sliding bearings and eliminates stresses and strains on the hose. It can be fabricated from different grades of stainless steel and carbon steel.



Drainmaster drain line hose swivel technical drawing.

Safety and certifications

CTS' composite hoses comply with international standards such as EN 13765:2003 and IMO IBC code. Although Drainmasters are rainwater drains exposed to low pressures when in use, the integrity of the assembly is checked by testing to 10 bar with water. All test and material certificates are supplied as a standard.

PRODUCT DATA

Drainmaster drain line hose swivel

Internal diameter	A	B	C	D	Weight
inches	mm	mm	mm	mm	kg
3	620	310	230	195	35
4	750	375	270	235	47.5
6	950	475	365	310	85
8	1.300	650	430	385	135

All our product information and specifications are drafted with extreme care but can be subject to change. We reserve the right to change product specifications.

REVISION NO.: 201904



CTS GROUP

PARTNER IN
TANK STORAGE
SOLUTIONS.

HEAD OFFICE

CTS NETHERLANDS B.V.

Riga 10
2993 LW Barendrecht
The Netherlands

TEL +31 (0)180 531 027

FAX +31 (0)180 531 848

EMAIL netherlands@cts.global

WEB www.cts.global